



melvyn  
**Danes**  
ESTATE AGENTS

**Horrell Road**

**Sheldon**

**£300,000**

## Description

### GREAT FAMILY HOME!

A well presented, extended semi detached house on a popular road in Sheldon.

This lovely property ticks many boxes and must be viewed to appreciate the size of the accommodation on offer. In a great location near to a good range of shops, schools and facilities and comprising:-

Porch, entrance hall, through lounge, guest WC, utility and extended kitchen/diner to the ground floor. Upstairs there are two double bedrooms, an extended third bedroom and the bathroom. On the top floor there is a usable loft room.

Further benefiting from central heating, double glazing, driveway, rear garden and rear double garage with a vehicular service road behind.



# Accommodation

## Driveway

### Enclosed Porch

5'5 x 1'8 (1.65m x 0.51m)

### Entrance Hall

5'5 x 11'3 (1.65m x 3.43m)

### Under Stairs Storage Leading To...

### Guest WC

3' x 5'9 (0.91m x 1.75m)

### Through Lounge

9'7 max x 25'1 to bay (2.92m max x 7.65m to bay)

### Extended Kitchen/Diner

17'5 max x 12'1 max (5.31m max x 3.68m max)

### Lobby

3'5 x 5'5 (1.04m x 1.65m)

### Utility

4'10 x 4'1 (1.47m x 1.24m)

### Landing

5'6 x 6'11 (1.68m x 2.11m)

### Bedroom One

9'7 max x 13'1 to bay (2.92m max x 3.99m to bay)

### Bedroom Two

9'8 x 11'8 (2.95m x 3.56m)

### Extended Bedroom Three

5'6 max x 17'5 (1.68m max x 5.31m)

### Bathroom

5'5 x 5'9 (1.65m x 1.75m)

### Loft Room

11'10 max x 10'1 (3.61m max x 3.07m)

### Storage Into Eaves

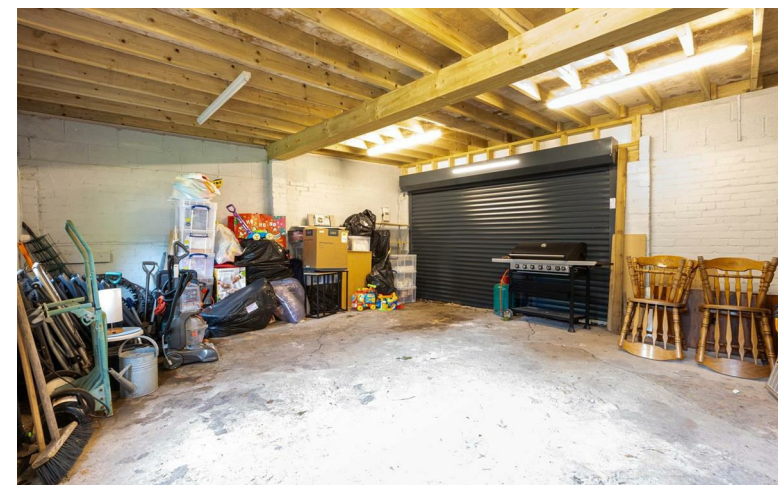
2'7 x 11'10 (0.79m x 3.61m)

### Rear Garden

### Double Garage

19'9 x 18'5 (6.02m x 5.61m)

### Rear Vehicular Service Road



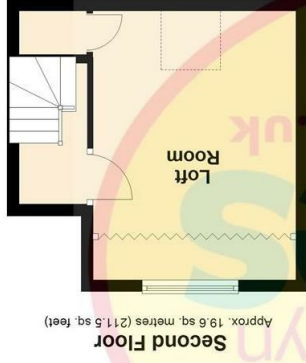
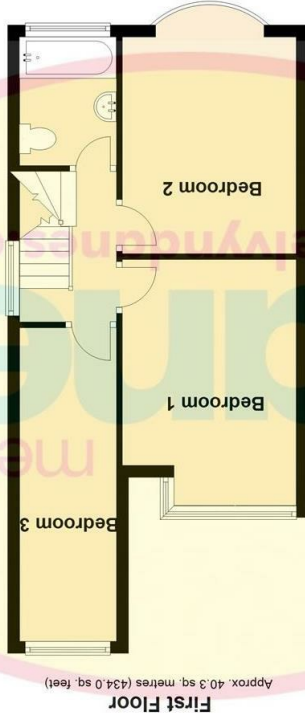
TENURE: We are advised that the property is FREEHOLD.

These particulars are for general guidance only and are based on information supplied and approved by the seller. Complete accuracy cannot be guaranteed and may be subject to errors and/or omissions. They do not constitute representations of fact or form part of any offer or contract. Any Prospective Purchaser should obtain verification of all legal and factual matters and information from their Solicitor, Licensed Conveyancer or Surveyors as appropriate. The agent has not sought to verify the legal title of the property and the buyers must obtain verification from their solicitor. Photographs are provided for illustrative purposes only and the items shown in these are not necessarily included in the sale, unless specifically stated. The agent has not tested any apparatus, equipment, fixtures, fittings or services mentioned and do not by these Particulars or otherwise verify or warrant that they are in working order.

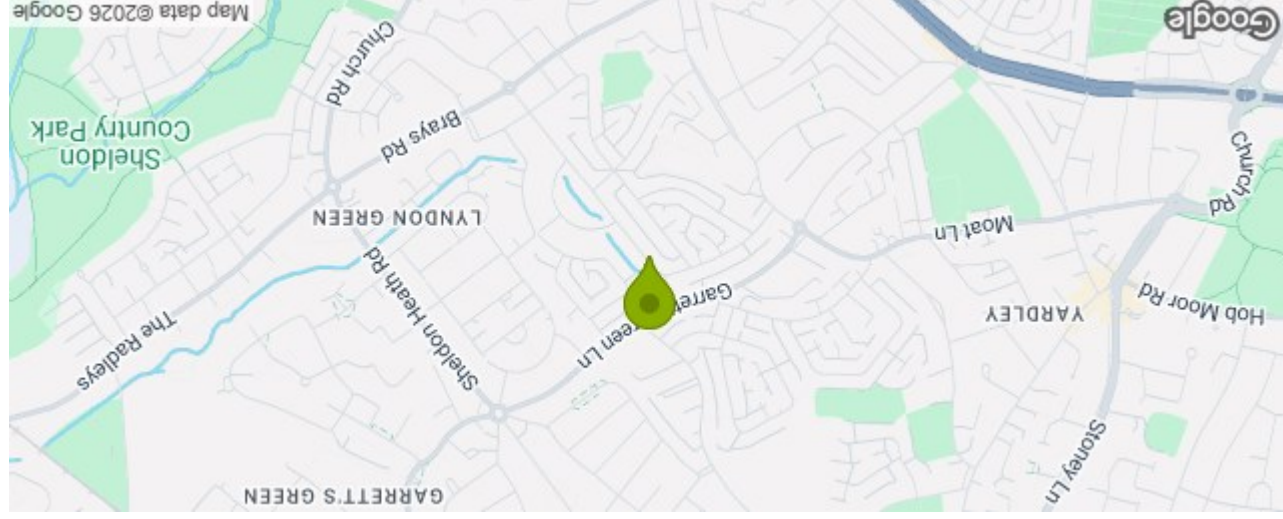
**BROADBAND/MOBILE:** Please refer to checker [www.ofcom.gov.uk](http://www.ofcom.gov.uk) for broadband and mobile coverage at the property. From data taken on 21/05/2026 we understand that the standard broadband download speed at the property is around 8 Mbps, and the estimated fastest download speed currently achievable for the property post code area is around 1800 Mbps. Actual service availability or speeds received may be different and may vary depending on the time a speed test is carried out. Mobile coverage can vary depending on the network provider and other factors that can affect the local mobile reception and actual services available may be different depending on the particular circumstances, precise location and network outages.

**MONEY LAUNDERING REGULATIONS:** Under anti-money laundering legislation, we are obliged to confirm the identity of individuals and companies and the beneficial owners of organisations and trusts before accepting new instructions, and to review this from time to time. To avoid the need to request detailed identity information from vendors and intending purchasers, we may use approved external services which review publicly available information on companies and individuals. However, should those checks, for any reason, fail adequately to confirm identity, we may write to you to ask for identification evidence. If you do not provide satisfactory evidence or information within a reasonable time, we may have to stop acting for you and we would ask for your co-operation in order that there will be no delay in agreeing a sale. Any purchaser who has a provisional offer accepted via this company will be liable to pay an administration fee of £25 (incl VAT) for each person connected with the transaction to cover these checks. If we are instructed by a third party selling agent they may carry out their own AML checks and any prospective purchaser will be required to pay any additional costs involved – please speak to the office for confirmation.

**REFERRAL FEES:** We may refer you to recommended providers of ancillary services such as Conveyancing, Financial Services and Surveying. We may receive a commission payment fee or other benefit (known as a referral fee) for recommending their services. You are not under any obligation to use the services of the recommended provider.



Total area: approx. 116.7 sq. metres (1256.5 sq. feet)



### 33 Horrell Road Sheldon Birmingham B26 2PB Council Tax Band: C

Energy Efficiency Rating	
Potential	Very energy efficient - lower running costs
Current	

Energy Efficiency Rating	Band	Running Costs (per year)
Very energy efficient - lower running costs	A	(92 plus)
Energy efficient	B	(81-91)
Decent	C	(69-80)
Needs improvement	D	(55-68)
Needs significant improvement	E	(39-54)
Very poor	F	(21-38)
Very poor	G	(1-20)

EU Directive 2002/91/EC

Please note that all measurements and floor plans are approximate and quoted for general guidance only and whilst every attempt has been made to ensure accuracy, they must not be relied on and do not form part of any contract.